



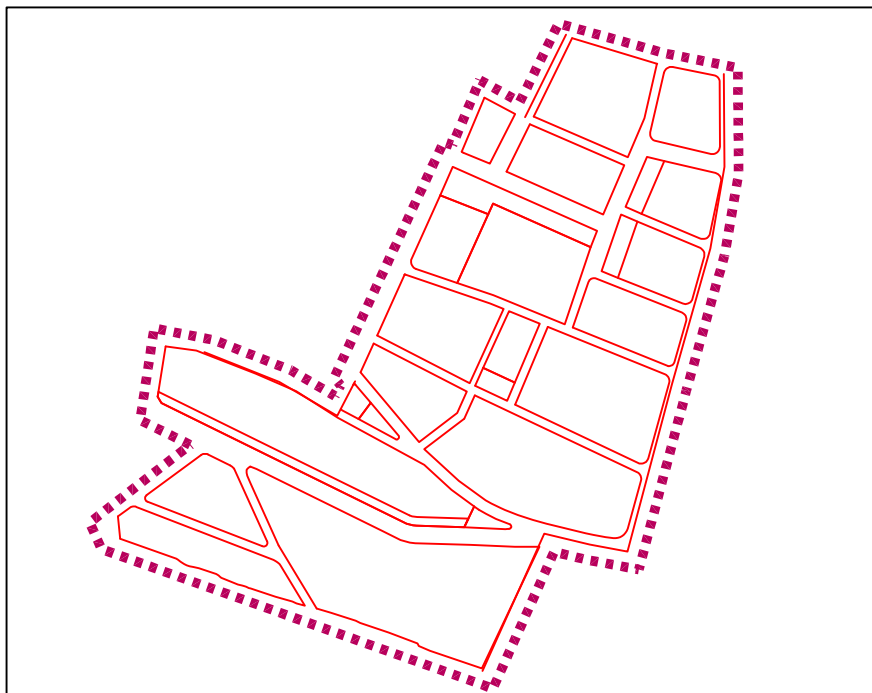
Comune di Bisceglie

Provincia di Bari

P.I.R.P.

**Programma integrato
di riqualificazione delle periferie**

*Delibera di G.R. n. 870 del 19/06/2006
e Delibera di G.R. n. 1542 del 13/10/2006*



OGGETTO:

Soluzioni progettuali preliminari

Tavola:

E

Scala: 1:200

REDAZIONE:

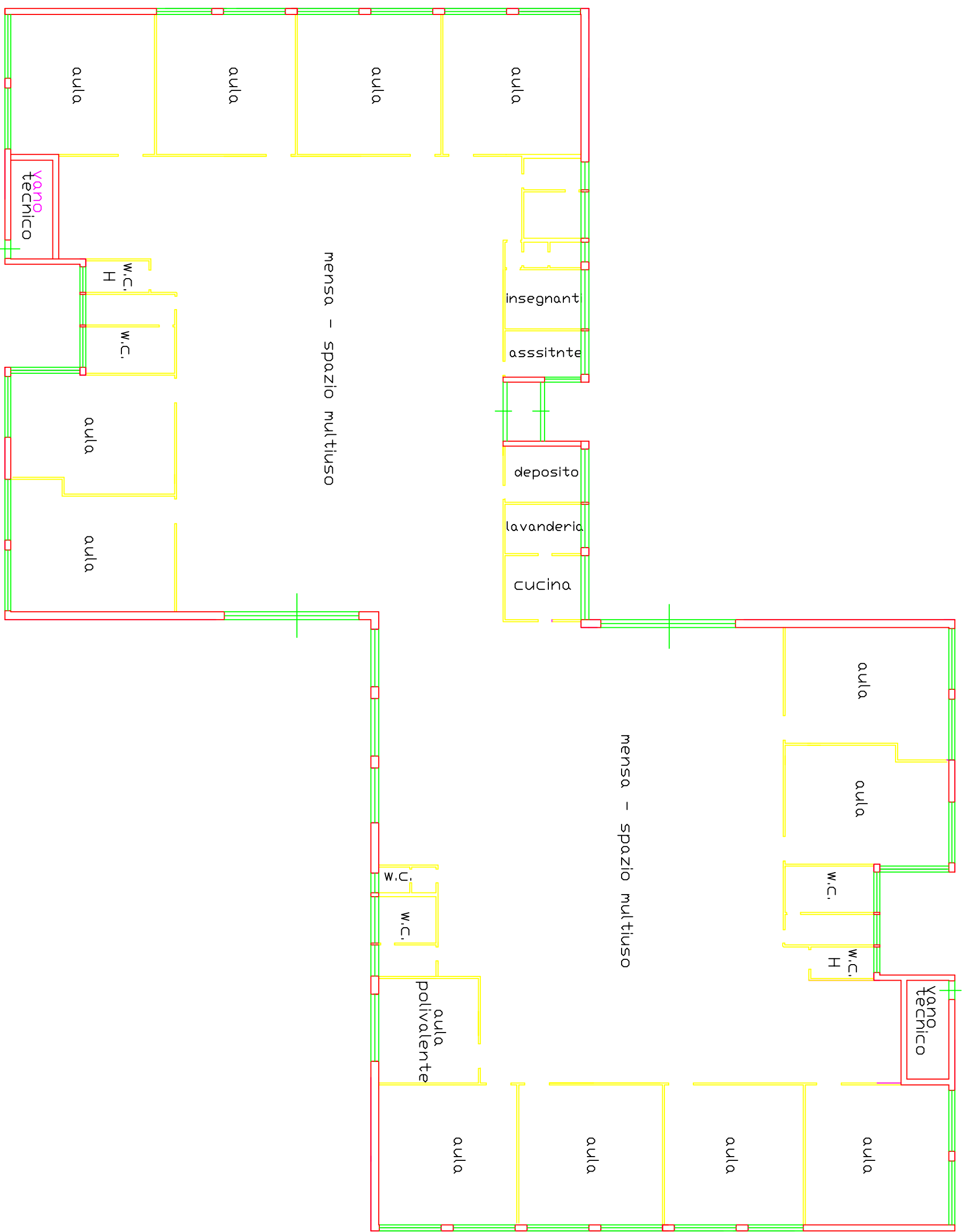
Arch. Giacomo LOSAPIO - Dirigente Ripartizione Tecnica

Data: Maggio 2007

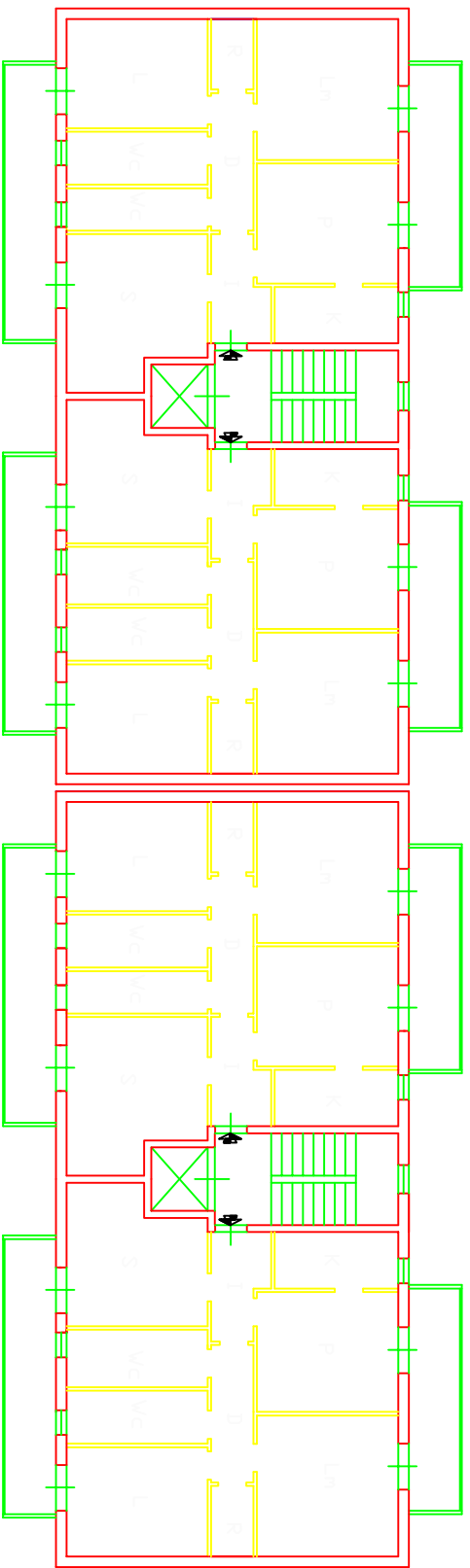
Aggiorn.

Approvato con Delibera di Consiglio Comunale n .51 del 12/05/07

SCUOLA MATERNA VIA MARTIRI DI VIA FANI



EDILIZIA SOVVENZIONATA



ASILO NIDO VIA TERLIZZI

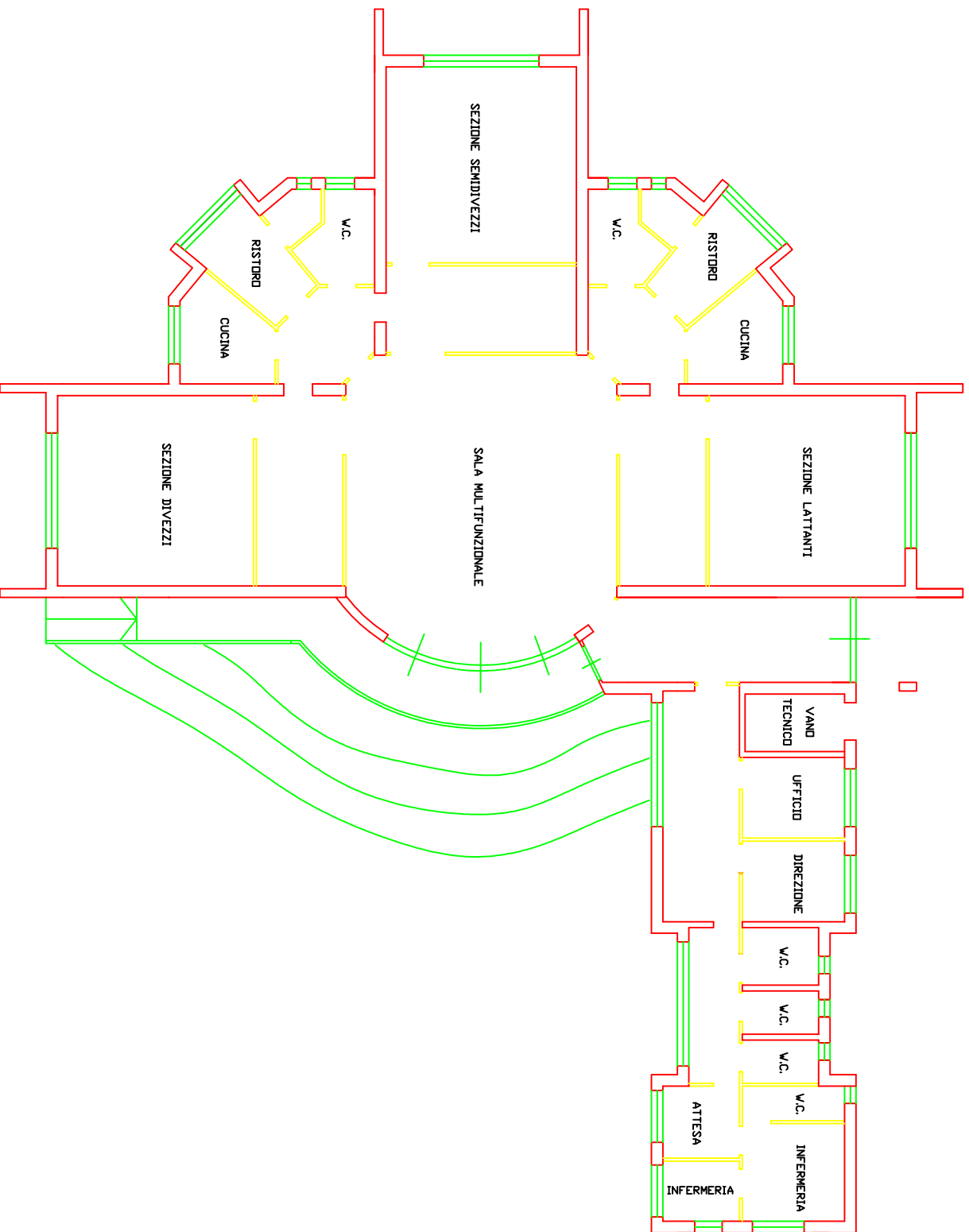
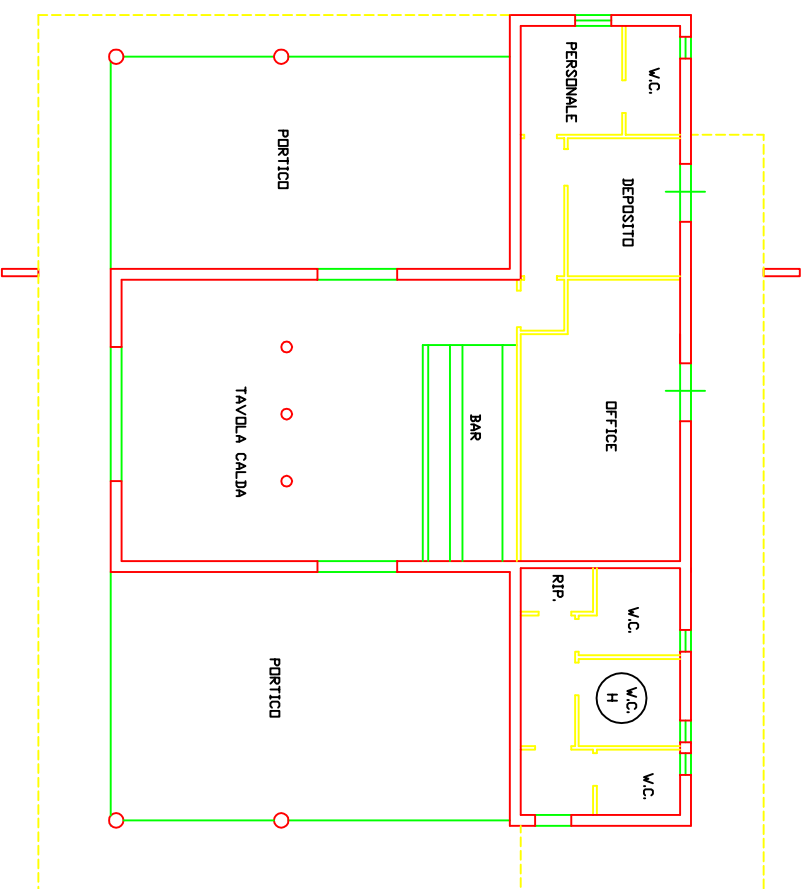
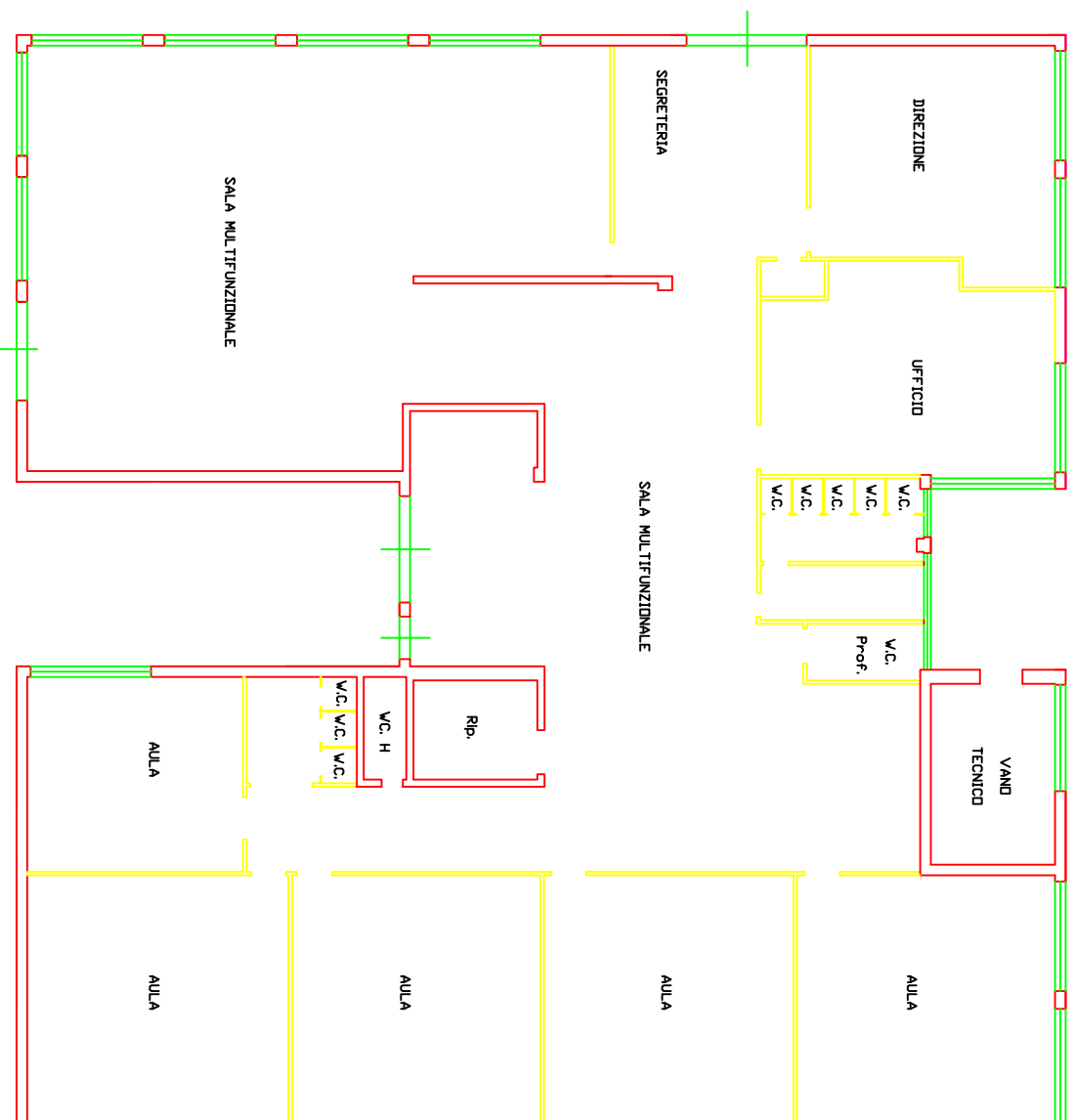


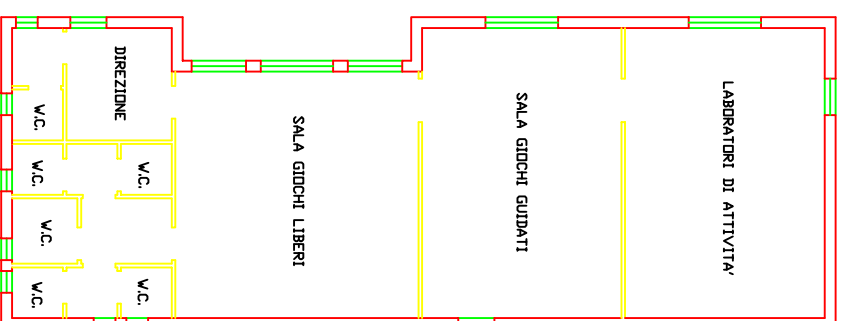
TAVOLA CALDA PARCO PUBBLICO



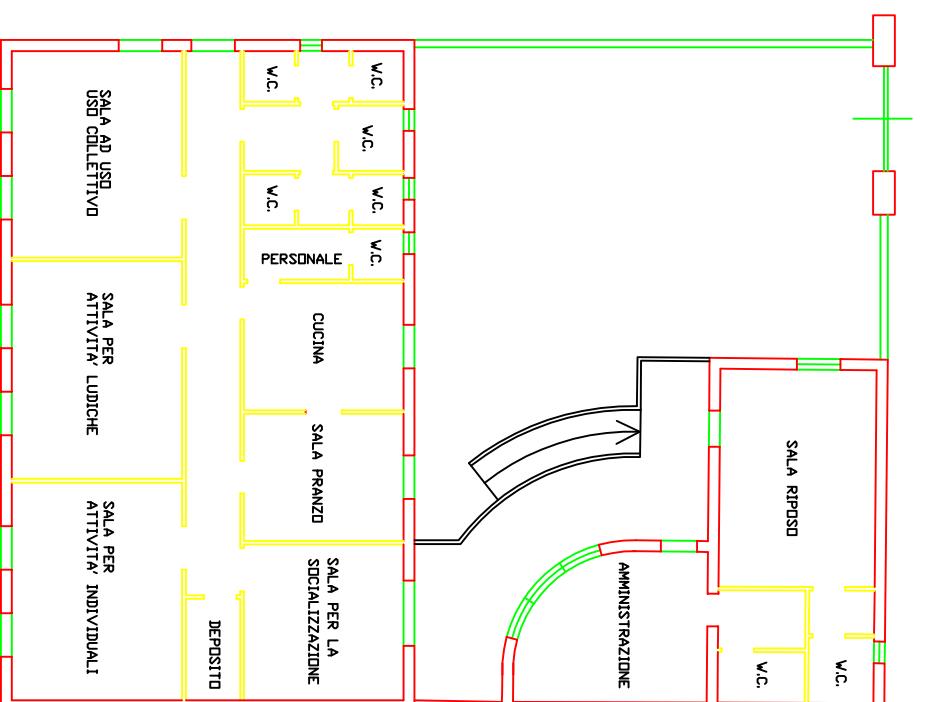
SCUOLA MATERNA VIA L.CADORNA



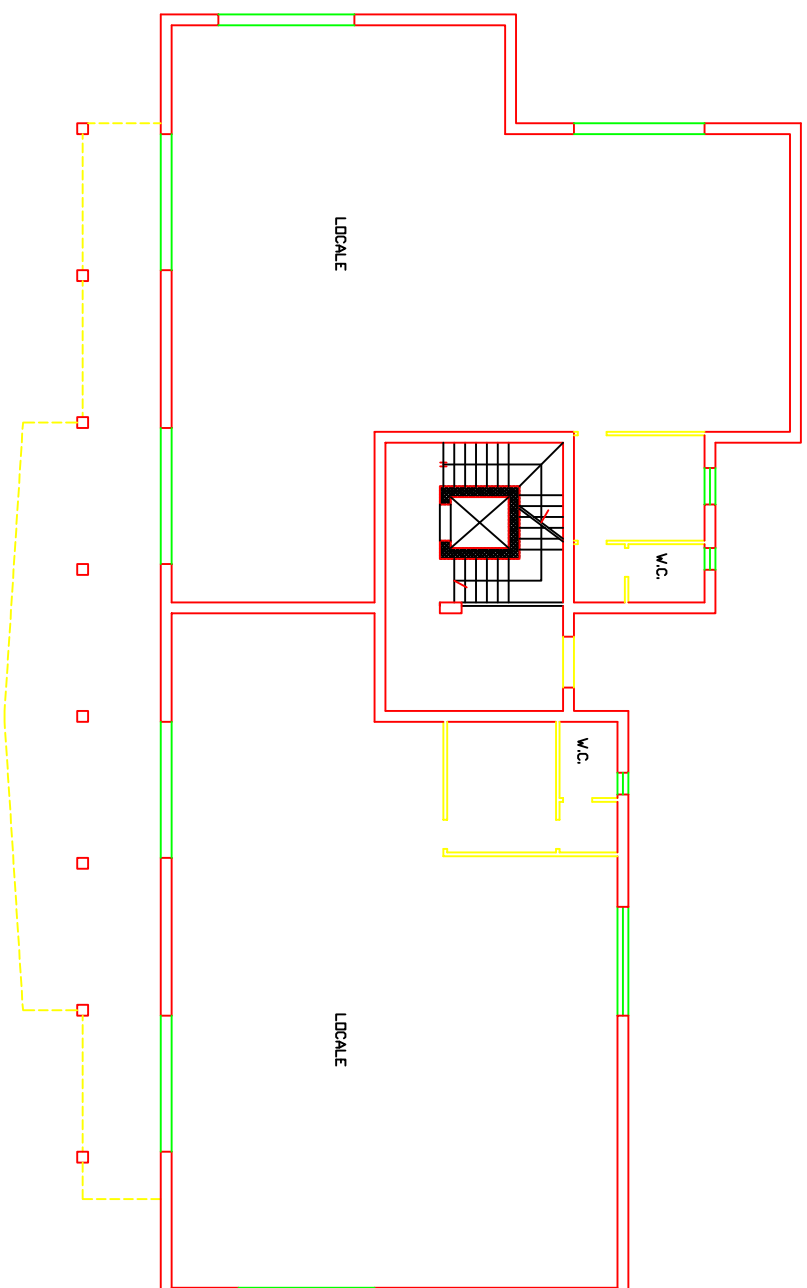
LUDOTECA



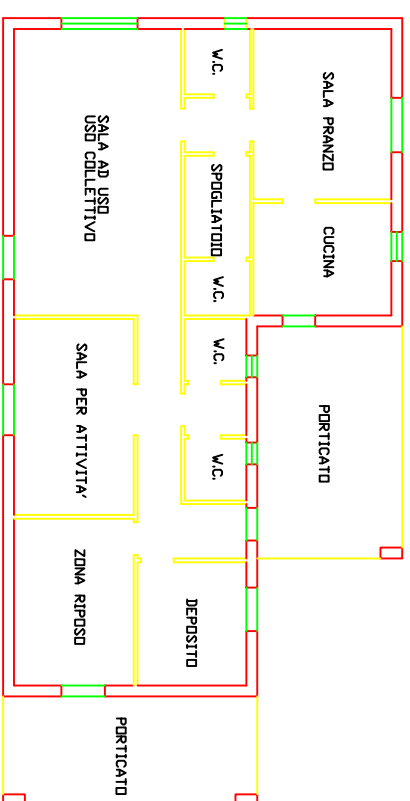
CENTRO DIURNO DIVERSAMENTE ABILI



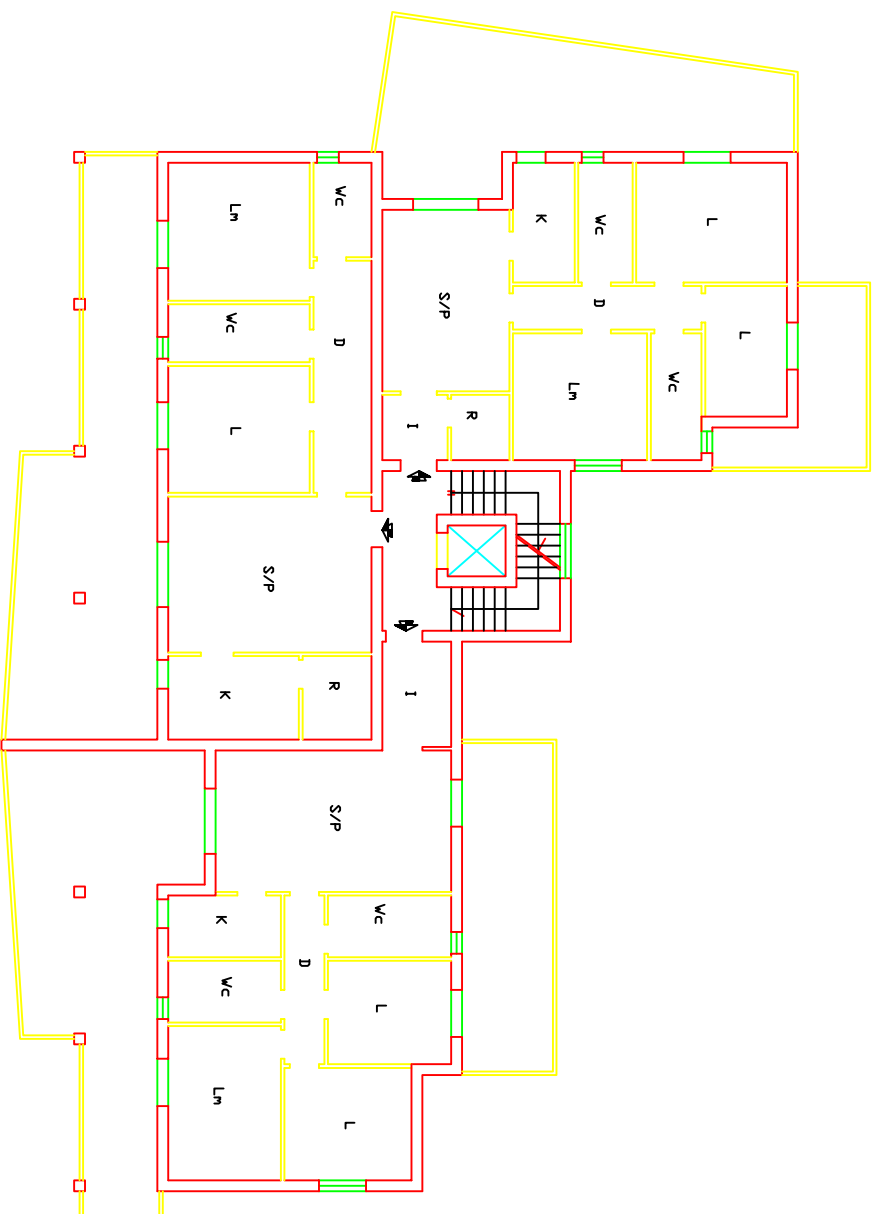
EDILIZIA COMMERCIALE INTERVENTO 2



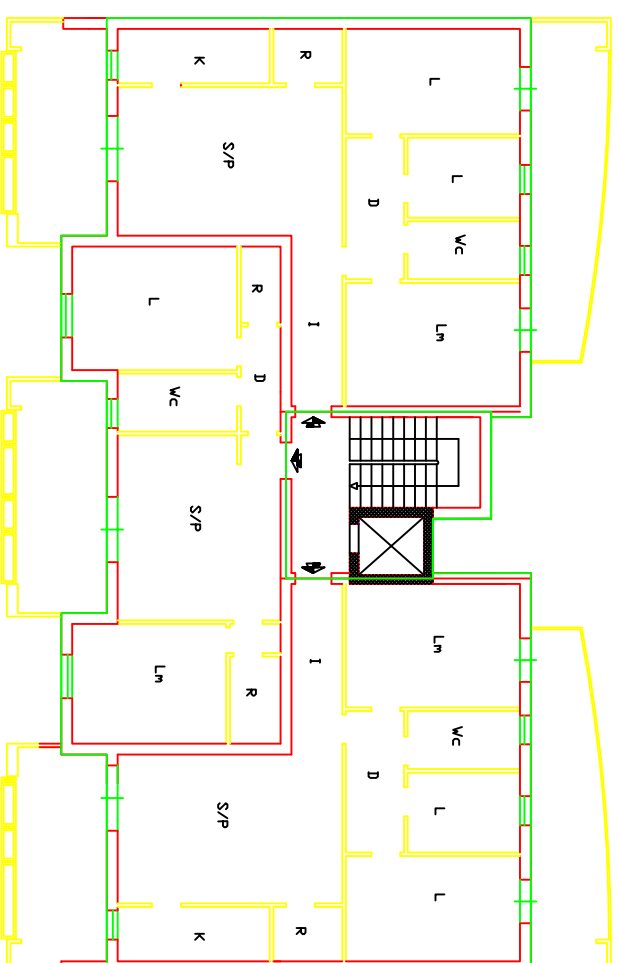
CENTRO DIURNO ANZIANI



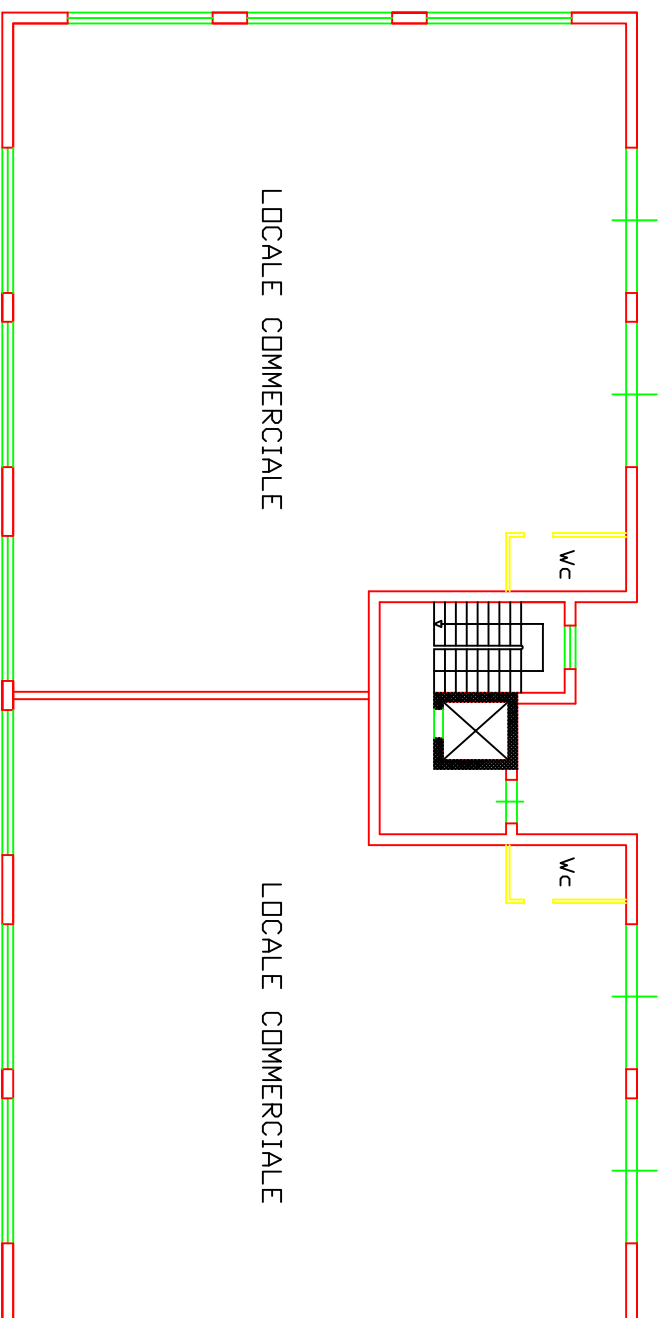
EDILIZIA CONVENZIONATA INTERVENTO 2



EDILIZIA CONVENZIONATA INTERVENTO 1



EDILIZIA COMMERCIALE INTERVENTO 1



EDILIZIA DIREZIONALE INTERVENTO 1

